

Installation Of New Thermal Cut-out

Step 01

Please follow these instructions below for all Cyclon still models.

Ensure the still has been turned off and left to cool. Remove the front panel of the still.



Scan the QR code to arrange a service

www.fistreeminternational.com
Email: sales@fistreem.co.uk

FISTREEM



Step 02

By using a 14mm box spanner, unscrew the nut underneath the thermal trip reset label from the inside of the still at

Step 03

Remove the back panel by unscrewing the 8 screws.



Step 04

Slowly pull out the copper coil out of the glass boiler along with the fibre wool, then remove the whole thermal cut-out.

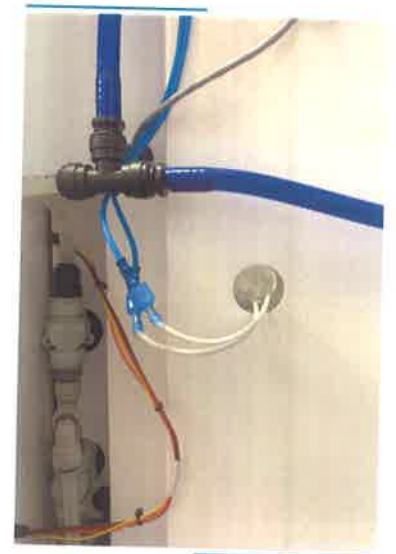


Step 06

Connect the new thermal cut-out cables with the blue cables that you have just disconnected. Slide the thermal cut-out into the glass boiler, flat

Step 05

Detach the blue cables from the current thermal cut-out by pulling it out.



Step 07

Place the fibre wool into the glass tube making sure it fits between the two cables and compact the wool to ensure the thermal cut-out has contact with the back of the tube.